



Portnall Road, London, W9

Garden maisonette

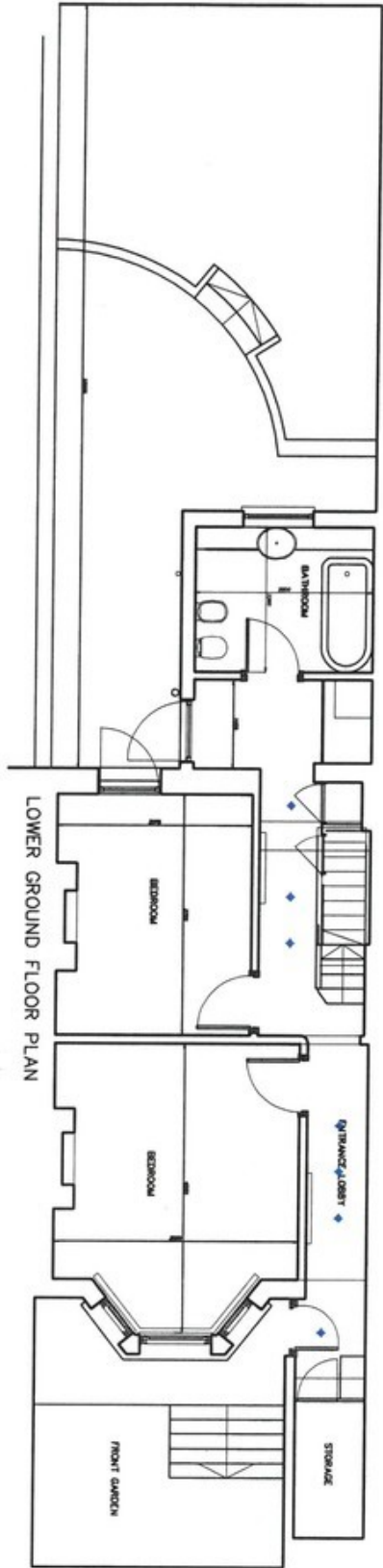
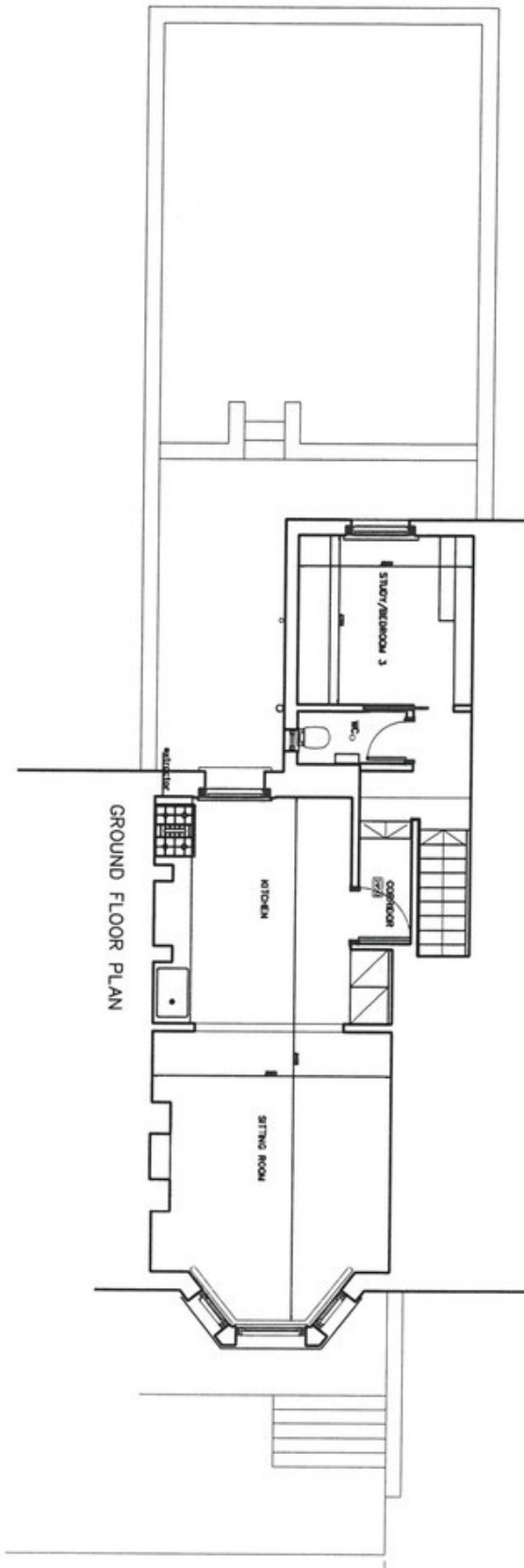
Asking Price Of: £850,000

Set within a beautiful converted Victorian house, this duplex, garden maisonette has been excellently renovated throughout. Using the high ceilings and open rooms, typical of the period, to ensure a feeling of space and light throughout, the renovations have updated the home with clever storage solutions and an impressive kitchen space. The home flows into its private garden where the attention to detail has been maintained through the double height patio and greenery and the addition of an outside sink.



- Three bedroom maisonette
- Private Garden
- In excellent decorative order
- Share of freehold
- Quiet tree lined street
- Good natural light and high ceilings
- Walking distance to Westbourne Park and Queens Park Underground

Set halfway between Queens Park and Westbourne Road tube stations, this 3 bed home offers easy access to the Bakerloo, Hammersmith and City and Circle as well as the many bus routes that run from Harrow Road. With a share of the freehold backed by a long lease, this maisonette offers a lovely long term home within the Maida Vale area.



Contact us

20 Great Western Road
London
W9 3NN

T: 020 7286 5757

E: sales@westways.co.uk



Westways



Tenure: Share of Freehold
Lease Remaining: 998

Gross Internal Area: 1,118 sq ft

Local Authority: Westminster City Council
Council Tax Band: E

EPC Rating: C

In accordance with the 1993 Misdescriptions Act: The agent has not tested any apparatus, equipment, fixtures, fittings or services and se cannot verify they are in working order. Neither has the Agent checked the legal documents to verify the Leasehold/Freehold status of the property. The buyer is advised to obtain verification from their solicitor or surveyor. Also photographs are for illustration only and may depict items which are not for sale or included in the sale of the property. All sizes are approximate.

naea | propertymark
PROTECTED

The Property
Ombudsman

rightmove

Zoopa.co.uk

OnTheMarket.com